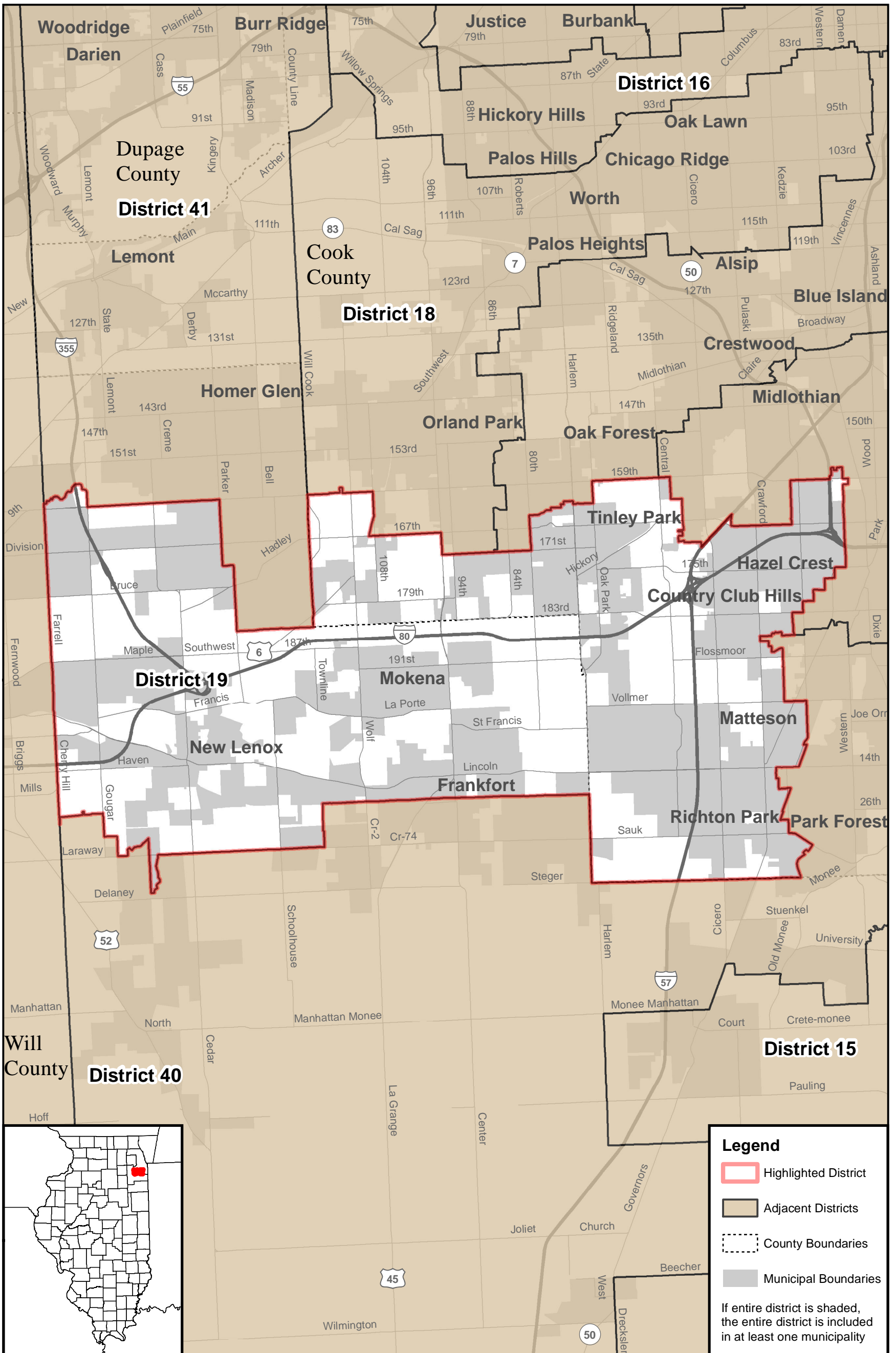


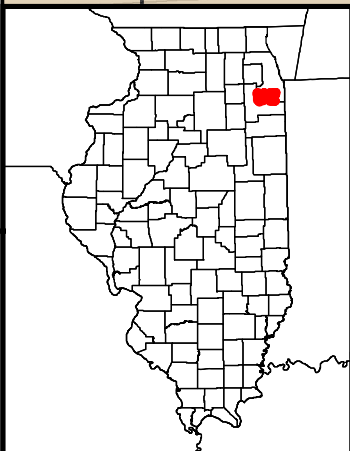
Illinois Senate District 19



Legend

- Highlighted District
- Adjacent Districts
- County Boundaries
- Municipal Boundaries

If entire district is shaded, the entire district is included in at least one municipality



1 0 1 Miles

 1 in = 2.2 miles

Senate District 19

(Partially within Cook and Will Counties)

Senate District 19 shall include that part of Illinois beginning on N. Farrell Rd at a point approximately 650 north of the intersection of N. Farrell Rd and W. 159th St in Lockport (Will County),
thence east for approximately 320 feet,
thence north for approximately 250 to Fiddymont Creek,
thence northeast and east along Fiddymont Creek to S. Gougar Rd,
thence south along S. Gougar Rd to W. 159th St,
thence east along W. 159th St to S. Parker Rd,
thence south along S. Parker Rd to the border of Homer and New Lenox Twps,
thence east along the Homer / New Lenox Twp border to the Will / Cook County border,
thence north along the Will / Cook County border to 159th St,
thence east along 159th St to a point approximately 300 feet west of 115th Ct,
thence north for approximately 70 feet,
thence east for approximately 1300 feet to 114th Av,
thence north along 114th Av to 158th St,
thence east along 158th St to 113th Ct,
thence south along 113th Ct to W. 159th St,
thence east along 159th St to 108th Av,
thence south along 108th Av to the Norfolk and Western rail line,
thence southwest along the Norfolk and Western rail line to 167th St,
thence east along 167th St to 96th Av,
thence south along 96th Av to 171st St,
thence east along 171st St to 80th Av,
thence north along 80th Av to Nottingham Rd,
thence east along Nottingham Rd to 76th Av,
thence north along 76th Av to 163rd Pl,
thence east along 163rd Pl to Olcott Av,
thence north along Olcott Av for approximately 380 feet,
thence southeast for approximately 370 feet to Lake Villa Av,
thence north along Lake Villa Av for approximately 350 feet,
thence east to Harlem Av,
thence south along Harlem Av to 163rd St,
thence east along 163rd St to the intersection of Brementowne Dr ,
thence continuing east along 163rd St (extended) to Brementowne Dr,
thence continuing east along Brementowne Dr to Oak Park Av,
thence north along Oak Park Av to W. 159th St,
thence east along W. 159th St to Long Av,
thence south along Long Av to 163rd St,
thence east along 163rd St (extended) along the Oak Forest municipal border for approximately 1320 feet,
thence south along the Oak Forest municipal border for approximately 3800 feet ,
thence west for approximately 660 feet to Lockwood Av,
thence south along Lockwood Av to 169th St,

thence east along 169th St to Thackery Av,
thence south along Thackery Av and continuing south along Thackery Av (extended) to Thackery Av,
thence west to Lockwood Av,
thence south along Lockwood Av to the Oak Forest municipal border
thence east along the Oak Forest municipal border for approximately 660 feet,
thence south for approximately 220 feet,
thence east for approximately 2000 feet to Forest Av,
thence south along Forest Av to I-57,
thence northeast along I-57 to the merge point of the northbound entrance ramp of I-57 from 167th St,
thence south along the northbound entrance ramp of I-57 from 167th St to 167th St,
thence east along 167th St to Turner Av,
thence north along Turner Av to W. 159th St,
thence east along W. 159th St to I-294,
thence north along I-294 and the northeast cloverleaf ramp of I-294 to Rockwell Av (extended),
thence continuing north along Rockwell Av (extended) and Rockwell Av to W. 157th St,
thence east along W. 157th St for approximately 320 feet,
thence south for approximately 290 feet ,
thence east to Campbell Av,
thence north along Campbell Av to W. 157th St,
thence east along W. 157th St to Western Av,
thence south along Western Av to W. 159th St,
thence east along W. 159th St to Oakley Av,
thence south along Oakley Av to W. 160th St,
thence west along W. 160th St to Western Av,
thence south along Western Av and continuing south along Western Av (extended), and continuing
south along Western Av to 175th St,
thence west along 175th St to Governors Hwy,
thence south for approximately 1300 feet,
thence west for approximately 1200 feet to a point approximately 100 feet west of Cherrywood Ln,
thence south for approximately 1340 feet ,
thence west for approximately 1380 feet to the terminus of Sacramento Av,
thence south along Sacramento Av to Hickory Rd,
thence west along Hickory Rd to Kedzie Av,
thence south along Kedzie Av to 183rd St,
thence west along 183rd St for approximately 1300 feet,
thence south for approximately 2660 feet to the north border of Coyote Run Golf Course,
thence west for approximately 1450 feet to Central Park Av,
thence north along Central Park Av to Village Dr,
thence west along Village Dr to the unnamed creek
thence west along the unnamed creek to 187th St (extended),
thence west along 187th St (extended) , and continuing west along 187th St to Crawford Av,
thence south along Crawford Av to 188th St,
thence east along 188th St to Avers Av,
thence south along Avers Av to 189th St,
thence east along 189th St to Hamlin Av,
thence south along Hamlin Av to Cherry Hill Dr,
thence east and northeast along Cherry Hill Dr to Central Park Av,

thence south along Central Park Av , and continuing south along Central Park Av (extended) to Central Park Av,
thence continuing south along Central Park Av to Vollmer Rd,
thence east along Vollmer Rd to Kedzie Av,
thence south along Kedzie Av to Scott Dr,
thence east along Scott Dr (extended) for approximately 400 feet to the Illinois Central (Amtrak) rail line,
thence southwest along the Illinois Central (Amtrak) rail line to Lincoln Hwy / 211th St,
thence west along Lincoln Hwy / 211th St to Wingate Rd,
thence south along Wingate Rd (extended) along the west border of Memorial Park to the terminus of 213th St,
thence east along 213th St to Maple St,
thence south along Maple St to the alley between 214th Pl and 215th St,
thence east along the alley between 214th Pl and 215th St to Front St,
thence continuing east along Front St to the Illinois Central (Amtrak) rail line,
thence southwest along the Illinois Central (Amtrak) rail line for approximately 3000 feet,
thence east for approximately 140 feet to the Canadian National rail line,
thence southwest along the Canadian National rail line to Cedar Rd (extended),
thence east along Cedar Rd (extended), and continuing east along Cedar Rd to Central Park Av,
thence south along Central Park Av to Sauk Trail,
thence southeast along Sauk Trail to Shabbona Dr,
thence southwest along Shabbona Dr to Mohawk St,
thence northwest along Mohawk St for approximately 340 feet,
thence southwest for approximately 470 feet,
thence southeast for approximately 305 feet to Shabbona Dr,
thence southwest and south along Shabbona Dr to the Will County border,
thence west and north along the Cook / Will County border to approximately 340 feet north of Prestwick Dr,
thence west along the north borders of Sections 25, 26, 27, 28, 29 & 30 of T35N, R12E (3rd principal meridian), to the border of Frankfort / New Lenox Twps,
thence south along the Frankfort / New Lenox Twp borders to W. Laraway Rd,
thence west along W. Laraway Rd to Foxwood Dr,
thence south along Foxwood Dr to Stacey Dr,
thence west along Stacey Dr to Nelson Rd,
thence north along Nelson Rd to Jackson Branch,
thence southwest along Jackson Branch to Stonebridge Dr,
thence northwest along Stonebridge Dr to Grandview Dr,
thence southwest along Grandview Dr to the terminus of Grandview Dr,
thence south for approximately 800 feet to E. Laraway Rd,
thence west along E. Laraway Rd for approximately 1250 feet,
thence north for approximately 2500 feet,
thence west for approximately 1500 feet to S. Gougar Rd,
thence north along S. Gougar Rd to W. Illinois Hwy,
thence west along W. Illinois Hwy for approximately 2300 feet,
thence north for approximately 350 feet,
thence west for approximately 250 feet,
thence south for approximately 350 feet to W. Illinois Hwy,
thence west/southwest for approximately 2750 feet to a point approximately 65 feet east of Cherry Hill Rd,

thence south parallel to Cherry Hill Rd for approximately 825 feet,
thence west for approximately 50 feet to Cherry Hill Rd,
thence north along Cherry Hill Rd to E. Cass St,
thence continuing north along the west borders of Sections 7 and 6, T35N, R11 E (3rd principal meridian)
to Maple Rd,
thence continuing north along S. Farrell Rd to the point of beginning.